

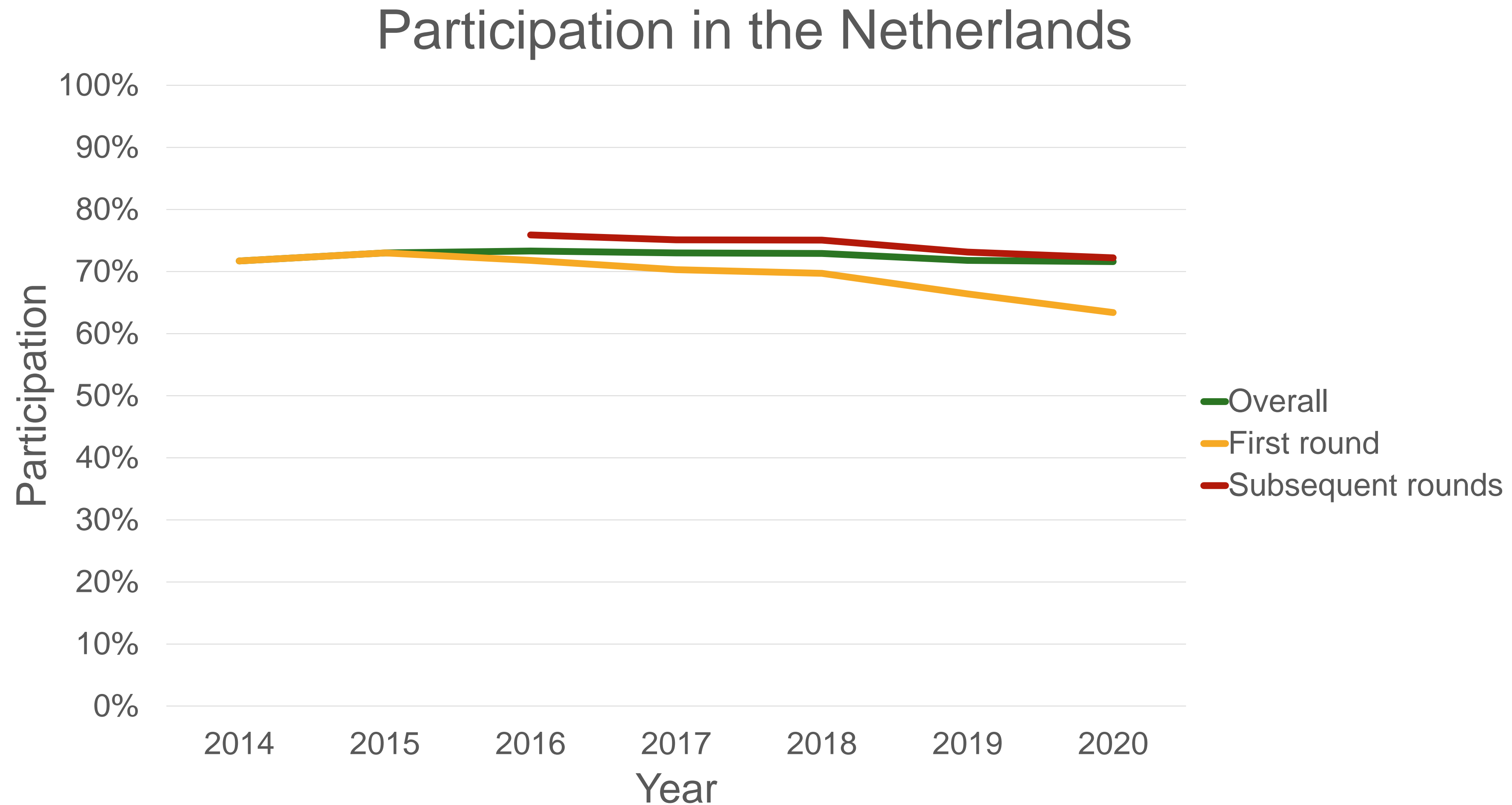


Participation in the Dutch Colorectal Cancer Screening Program

H.J. van de Schootbrugge-Vandermeer, C. van Iersel,
M.E. van Leerdam, I. Lansdorp-Vogelaar, E. Toes-Zoutendijk



Motivation



Source: National monitoring report colorectal cancer screening, 2014-2020



Aim

Investigate demographic differences
between participants and
non-participants

What is known already?

- Available data: sex, age, postal code
- Postal code > area SES

> PLoS One. 2022 Feb 17;17(2):e0264067. doi: 10.1371/journal.pone.0264067. eCollection 2022.

Socioeconomic differences in participation and diagnostic yield within the Dutch national colorectal cancer screening programme with faecal immunochemical testing

Miriam P van der Meulen ¹, Esther Toes-Zoutendijk ¹, Manon C W Spaander ², Evelien Dekker ³, Johannes M G Bonfrer ⁴, Anneke J van Vuuren ⁵, Ernst J Kuipers ², Folkert J van Kemenade ⁵, M F van Velthuisen ⁵, Maarten G J Thomeer ⁶, Harriët van Veldhuizen ⁷, Harry J de Koning ¹, Iris Lansdorp-Vogelaar ¹, Monique E van Leerdam ⁸

	Odds Ratio *
Socialeconomic status	
Quintile 1 (highest SES)	<i>ref</i>
Quintile 2	1.07 (1.06-1.08)
Quintile 3	1.07 (1.06-1.08)
Quintile 4	0.96 (0.95-0.97)
Quintile 5 (lowest SES)	0.73 (0.72-0.74)

* Corrected for age and sex



What is known already?

- Available data: sex, age, postal code
- Postal code > urban density

[Prev Med Rep.](#) 2022 Jun; 27: 101791.

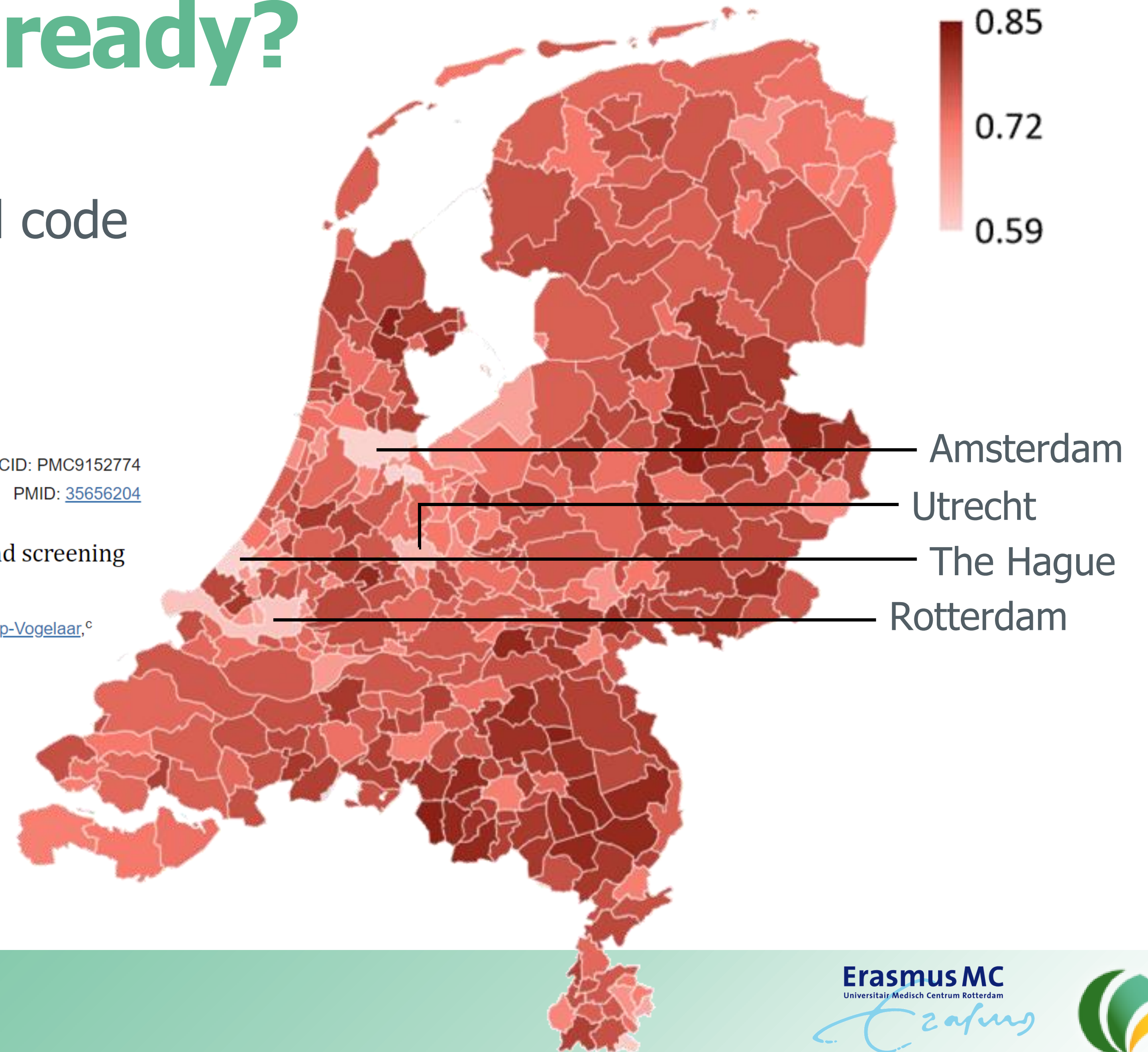
Published online 2022 Apr 5. doi: [10.1016/j.pmedr.2022.101791](https://doi.org/10.1016/j.pmedr.2022.101791)

PMCID: PMC9152774

PMID: [35656204](https://pubmed.ncbi.nlm.nih.gov/35656204/)

Urban density differences in colorectal cancer screening participation and screening yield in The Netherlands

[Clasine M. de Klerk](#),^a [Manon van der Vlugt](#),^a [Bente A. Smagge](#),^b [Esther Toes-Zoutendijk](#),^c [Iris Lansdorp-Vogelaar](#),^c [Evelien Dekker](#),^{a,*} and [Patrick M. Bossuyt](#)^d



What is new?

- Individual-level data

Participation

Sex

Age

Income

Household characteristics

Migration background

Education

Employment status

- Advantage: possibility to combine different factors

Multivariate logistic regression

- Sex
- Age
- Income
- Household type
- Migration background
- Education
- Employment status



LOGISTIC
REGRESSION



Participation



Multivariate logistic regression

- Sex ✓
- Age ✓
- Income
- Household type
- Migration background
- Education
- Employment status



LOGISTIC
REGRESSION



Participation



Participation by income quartile

Sex ✓

Age ✓

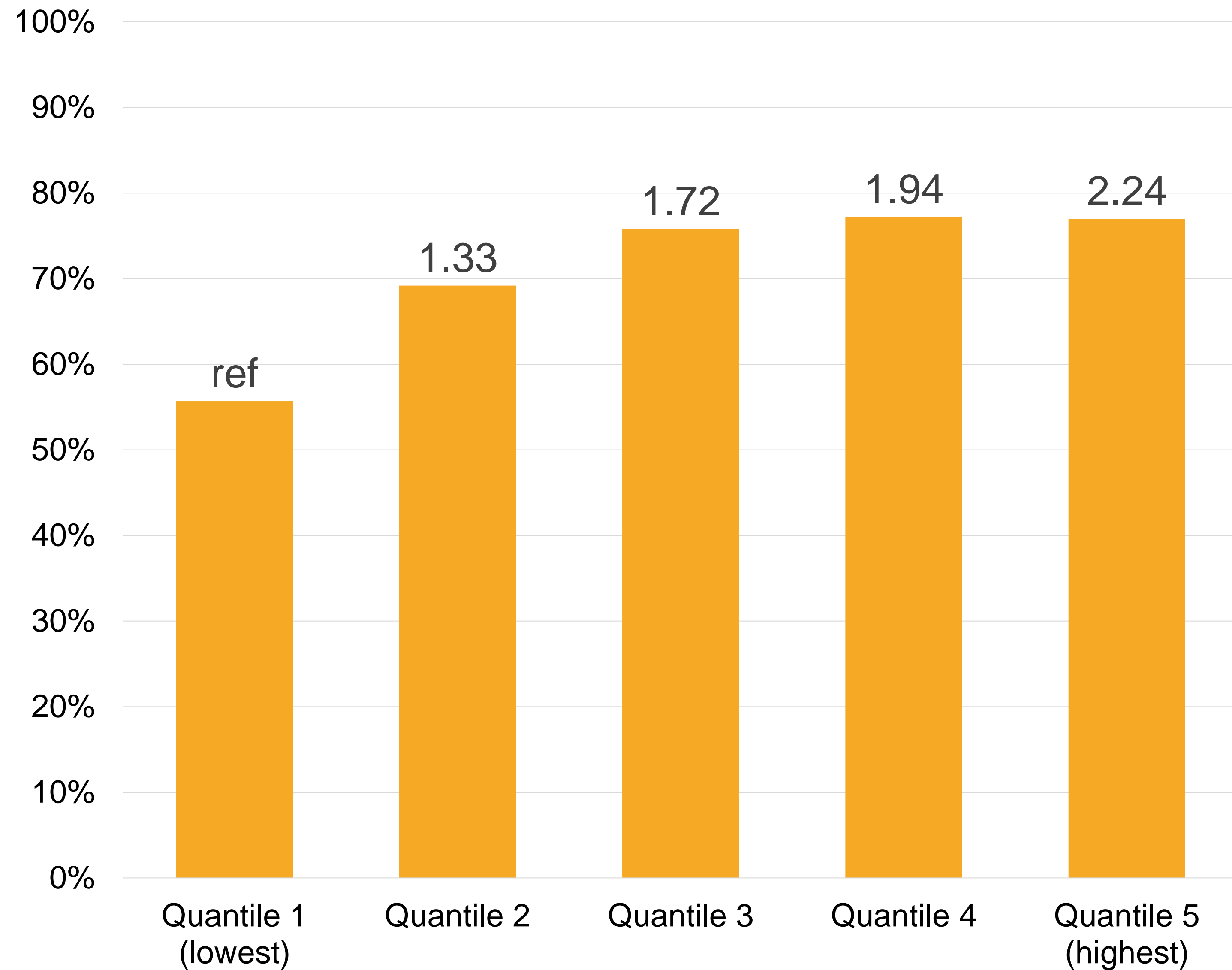
Income

Household type

Migration background

Education

Employment status



Participation by household type

Sex ✓

Age ✓

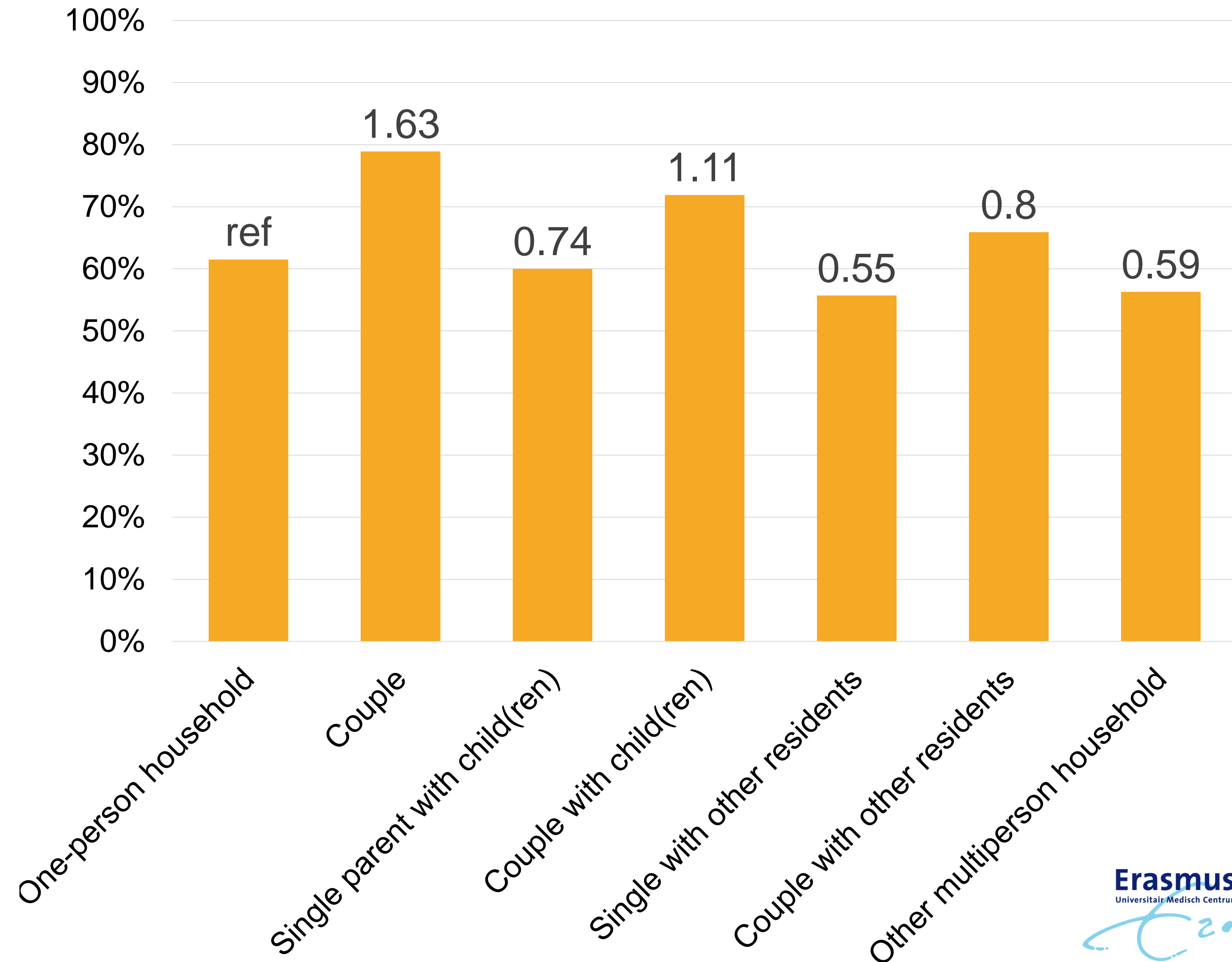
Income ✓

Household type

Migration background

Education

Employment status



Participation by migration background

Sex ✓

Age ✓

Income ✓

Household type ✓

Migration background

Education

Employment status

- Five most common countries of origin
- Generation migrant



Participation by migration background

Sex ✓

Age ✓

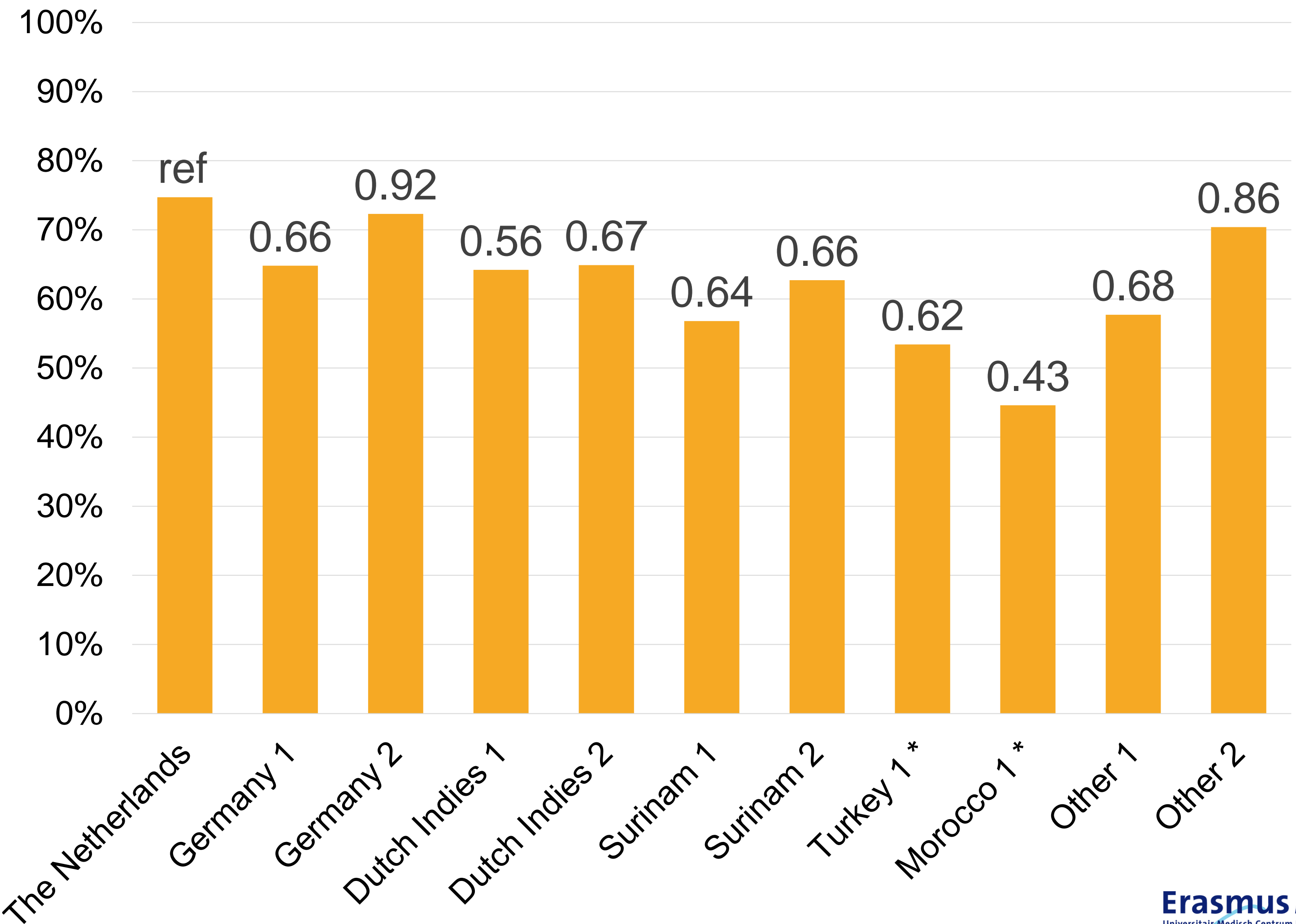
Income ✓

Household type ✓

Migration background

Education

Employment status



* Turkish and Moroccan 2nd generation migrants are only small groups and are therefore left out



Participation by education level

Sex ✓

Age ✓

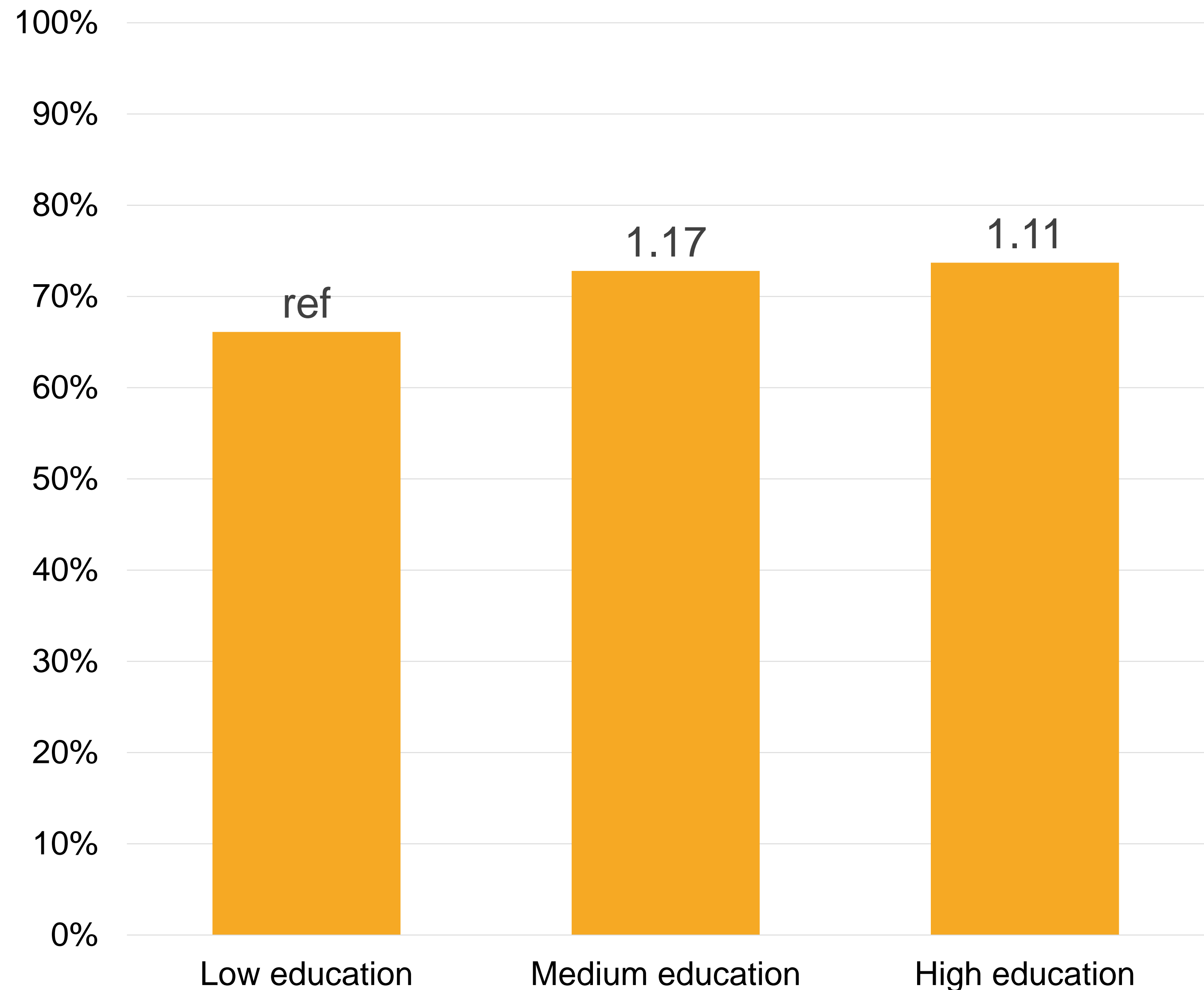
Income ✓

Household type ✓

Migration background ✓

Education

Employment status



Participation by socioeconomic group

Sex ✓

Age ✓

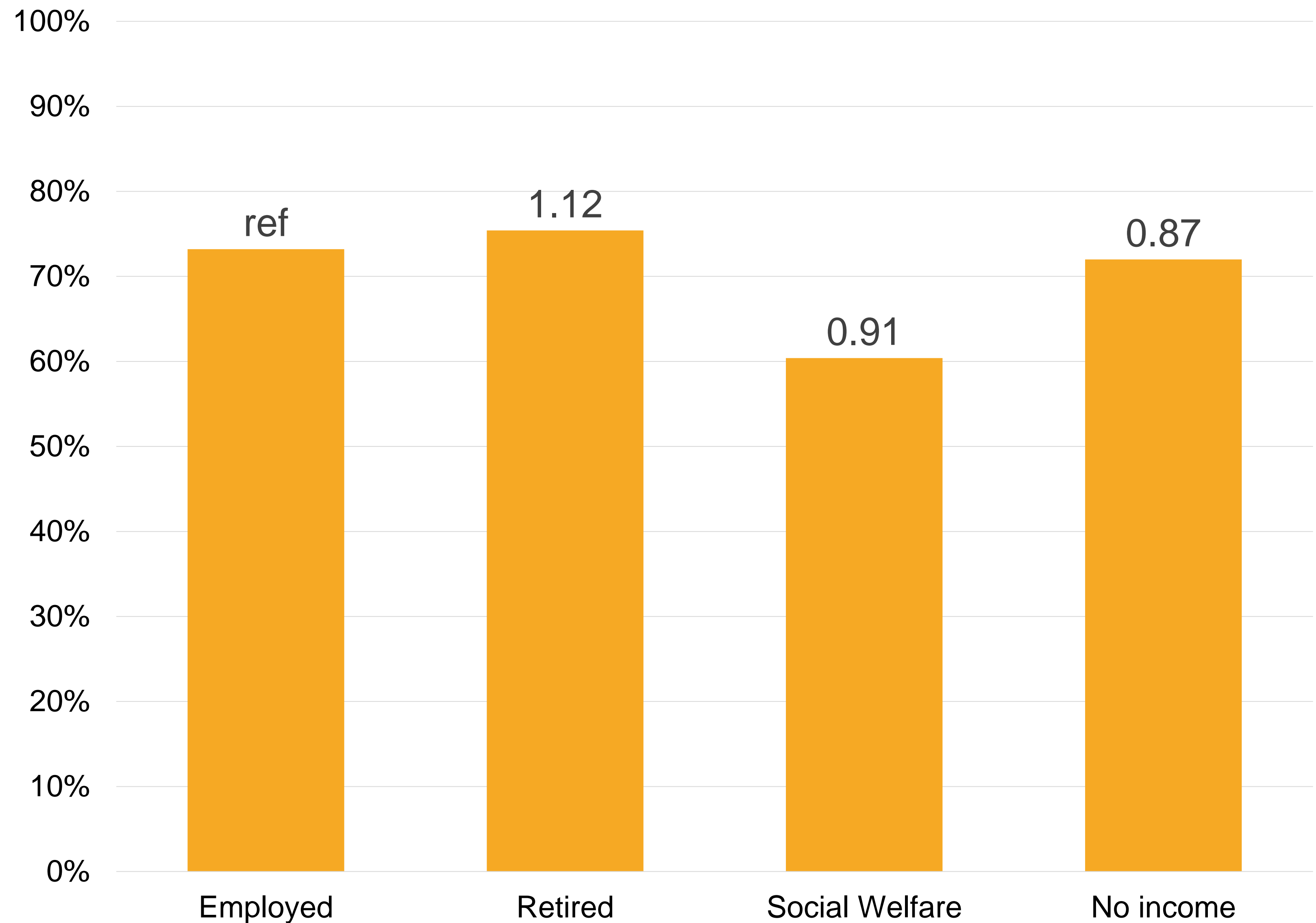
Income ✓

Household type ✓

Migration background ✓

Education ✓

Employment status



Take-away message

- Participation in the Netherlands is high, but decreasing
- Health inequities are increased for certain subgroups:
 - Low income
 - Single
 - Migration background





WEO

World Endoscopy
Organization

Erasmus MC

Universitair Medisch Centrum Rotterdam



Thank you!

h.vandermeer@erasmusmc.nl

