

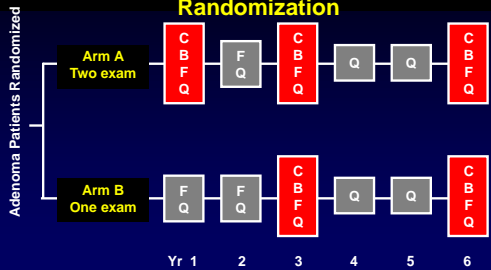
Role of FIT in Post-Polypectomy Surveillance

Ann G Zauber, PhD
 Iris Lansdorp-Vogelaar, PhD
 Ethna McFerran, RN, BScHons

FIT Screening Program with FIT surveillance post polypectomy

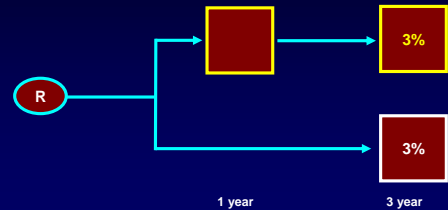
- David Ransohoff suggested topic
- Has Fecal Testing been used before for post polypectomy surveillance? (NPS)
- MISCAN-Colon microsimulation modeling
 - Ethna McFerran, NCI All Ireland Health Economist Scholar, working with Iris Lansdorp-Vogelaar

National Polyp Study in 1990's Surveillance Arms and Strategies Following Randomization



C = Colonoscopy B = Barium enema
 F = Fecal Occult Blood Test Q = Interval History Questionnaire

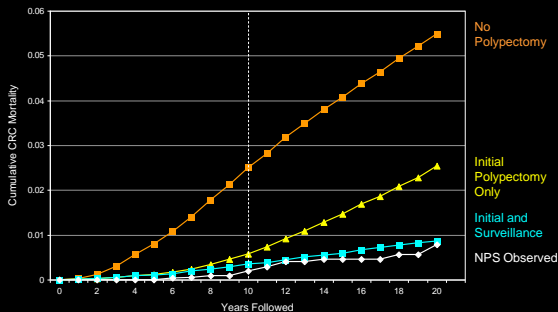
National Polyp Study Advanced Adenomas Findings* at Surveillance Colonoscopy



*Winawer, Zauber et al. NEJM 1993. (3%)

Martinez, Gastroenterology 2009 (7%)

Cumulative Colorectal Cancer Mortality for National Polyp Study – MISCAN Model and Observed NPS



Potential for FIT

- role of faecal immunochemical testing (FIT) demonstrated equivalence to colonoscopy in surveillance for interval cancers, in other HR groups (e.g. family history of CRC)
- using FIT, detected neoplasia's sooner than scheduled surveillances, Lane et al, 2010
- So we hypothesise that interval FIT analyses could be used to detect missed or rapidly developing lesions in surveillance programs.

FIT Screening Program with FIT post polypectomy surveillance

- Cohort of 10,000,000
- Biennial FIT Screening 55-75 (cutoff =100ng haemoglobin per mL) for screening, with baseline polypectomy
- Followed by Surveillance intervals post polypectomy:
 - 1 year for highest risk adenomas
 - 3 years for intermediate risk adenomas
 - 5 years for low risk adenomas
- Comparing No surveillance v 's colonoscopy surveillance v 's FIT surveillance (100ng haemoglobin per mL)

Model Assumptions

- Full adherence to screening
- Standard assumptions on
 - colonoscopy reach
 - established MISCAN FIT sensitivities
 - complications of polypectomy

Outcomes

- Life years gained
- QALYs
- Total CRC mortality

Current status

- "I was taught that the way of progress is neither swift nor easy"
- Marie Curie for week of May 16, 2016

Thank you!

National Polyp Study
Cancer Intervention and Surveillance
Modeling Network