


FIT IN THE KAISER PERMANENTE SYSTEM

Jeffrey Lee MD, MAS
 Gastroenterology Fellow
 University of California San Francisco
 Division of Research, KPNC

Kaiser Permanente Northern California



Kaiser Permanente

- Kaiser Foundation Health Plan
- Kaiser Foundation Hospitals
- The Permanente Medical Group

KP Northern California Region



- 3.3 million members
- 29 medical offices
- 19 hospitals
- 7,000+ physicians
- 54,000 employees
- \$16 billion op revenue
- 34% market share

History of CRC Screening in KPNC

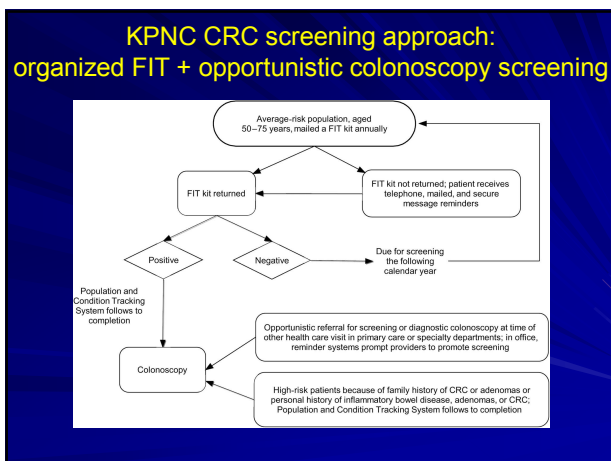
1994-2003	2004	'05 - '06	'07 -
CoCaP program	HEDIS adoption	Facility-based FIT CRC	Mailed FIT outreach
FSIG Capacity Built	CRC screening rates ~ 40%	Screening pilots	FIT in-reach (e.g., FLU-FIT, etc.)
FSIG > FOBT			Monitored colonoscopy follow-up

Opportunistic
Organized

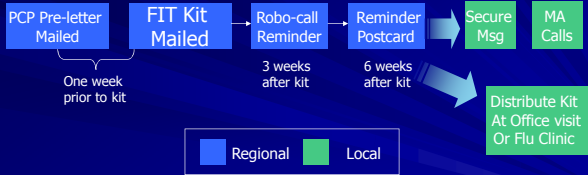
OC Auto FIT – Polymedco/Eiken

- Single sample FIT
- Automated processing
- Cut-off: 100 ng/ml or 20 mcg/g
- Pilot study showed superior performance
- Lab directors requested an automated test
 - Better quality control
 - Minimize repetitive strain



FIT Outreach Program



PCP Pre-letter Mailed
FIT Kit Mailed
Robo-call Reminder
Reminder Postcard
Secure Msg
MA Calls

One week prior to kit 3 weeks after kit 6 weeks after kit

Regional
Local

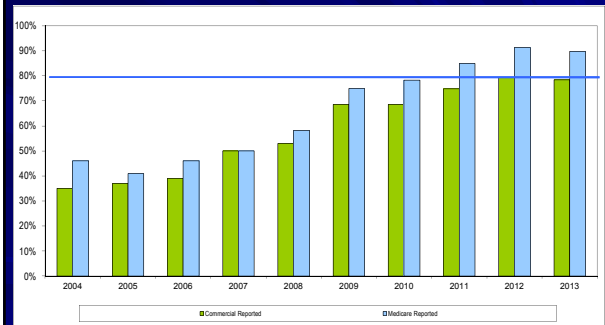
Distribute Kit At Office visit Or Flu Clinic

Region-wide 2nd kit mailing to non-responders

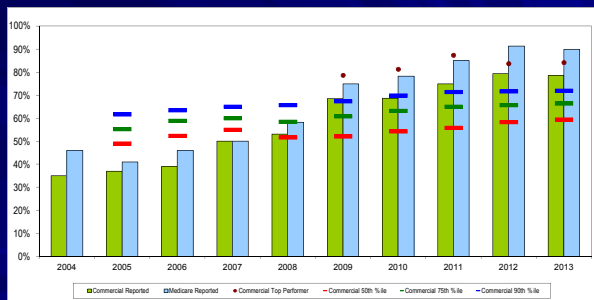
FIT In-reach Program

- FLU-FIT program
- Electronic health record prompts – identify patients who are due for CRC screening at time of office visit
 - Allows discussion for CRC screening in every office visit
- Any physician can order FIT for CRC screening

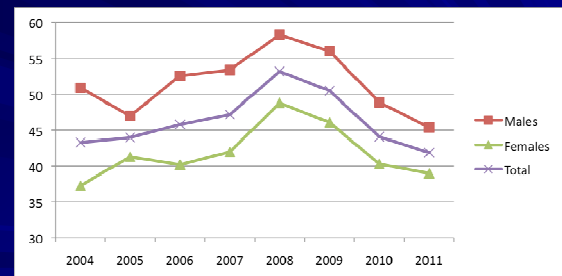
CRC screening rates: HEDIS performance



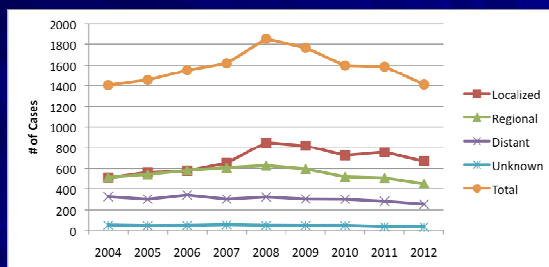
Comparison of CRC screening rates



CRC Incidence at KPNC



CRC cases by stage



FIT studies from KPNC

- Allison et al. A comparison of fecal occult-blood tests for colorectal cancer screening. N Engl J Med 1996
- Allison et al. Screening for colorectal neoplasms with new fecal occult blood tests: update on performance characteristics. JNCI 2007
- Lee et al. Accuracy of fecal immunochemical tests for colorectal cancer: systematic review and meta-analysis. Ann Intern Med 2014
- Levin et al. Adherence to annual fecal immunochemical testing in a large, community-based population. DDW 2013
- Mysliwicz et al. Fecal immunochemical test performance over four rounds of annual testing in an outreach screening program. DDW 2014