

**ENDOSWISS 2019 - LIVE**

# «MASTERCLASS IMAGING – TEACHING COURSE»

**Friday, June 21<sup>st</sup> 2019 2.00–5.00 p.m. Location: Hirslanden Clinic Zurich**  
conducted by Haruhiro Inoue, Gieri Cathomas and Hironori Yamamoto

under patronage of the **Japanese Gastroenterological Endoscopy Society (JGES)**  
and **Swiss Association of Gastrointestinal Pathology (SAGIP)**  
Sponsored by **Fujifilm**

**International Faculty:** Patrick Aepli (Switzerland), Fridolin Bannwart (Switzerland),  
Gieri Cathomas (Switzerland), Stefan Groth (Germany), Mamuka Gurgendidze (Georgia),  
Haruhiro Inoue (Japan), Marnix Jansen (United Kingdom), Aurelia Noske (Switzerland),  
Roos Pouw (The Netherlands), Krish Ragunath (Australia), Vladyslav Yakovenko (Ukraine),  
Hironori Yamamoto (Japan), Karl Yu Kim Teng (Philippines)

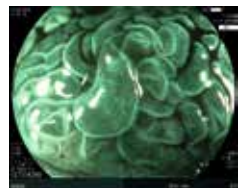
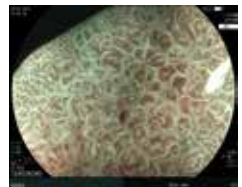
Live streaming on Endo Academy <http://endo.ua/>  
and Endoscopy campus <https://www.endoscopy-campus.com/en/>  
Registration: [www.endoswiss.ch](http://www.endoswiss.ch)



DGE-BI



- 2.00–2.05 p.m. Welcome**  
Stefan Seewald
- 2.05–2.20 p.m. How to use the latest magnification technology – a practical approach**  
Hironori Yamamoto
- 2.20–2.50 p.m. How to classify early neoplastic lesions in the GI tract – an update**
- Esophagus (Squamous cell)  
Haruhiro Inoue (5 min)
- Esophagus (Barrett's)  
Krish Ragnath (5 min)
- Stomach (Europe)  
Patrick Aepli (5 min)
- Stomach (Japan)  
Haruhiro Inoue (5min)
- Colon  
Hironori Yamamoto (10 min)
- 2.50–3.20 p.m. Case presentations and discussions**
- 3.20–3.30 p.m. Coffee break**
- 3.30–3.45 p.m. What does the pathologist needs to know from the endoscopist?**  
Gieri Cathomas and Fridolin Bannwart
- 3.45–4.00 p.m. What makes an expert Barrett's histopathologist? Predictors of diagnostic concordance in the diagnosis of Barrett's dysplasia**  
Marnix Jansen
- 4.00–4.30 p.m. Case presentations and discussion**
- 4.30–4.40 p.m. Internet teaching platforms for endoscopic imaging**  
Stefan Groth
- 4.40 – 5.00 p.m. Discussion**



## Endorsement

