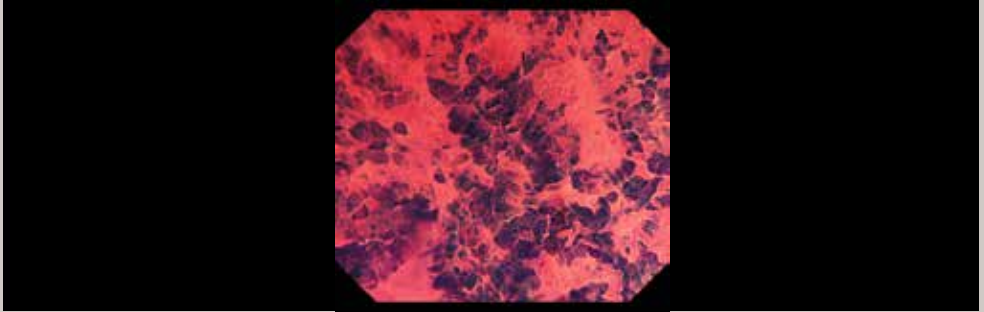


GastroZentrum  
Hirslanden



**HIRSLANDEN**  
KLINIK HIRSLANDEN



**ENDOSWISS 2019 - LIVE**

# INTERNATIONAL WORKSHOP ON DIAGNOSTIC AND THERAPEUTIC ENDOSCOPY

Fujifilm Preemeeting June 21<sup>st</sup> 2019

«Masterclass imaging – teaching course»

conducted by the Japanese Gastroenterological Endoscopy Society (JGES)  
and Swiss Association of Gastrointestinal Pathology (SAGIP)

Location: Hirslanden Clinic Zurich

International Workshop on Diagnostic and Therapeutic Endoscopy  
Zurich June 22<sup>nd</sup> 2019

Location: Hirslanden Clinic Zurich

with Live Transmission from Hirslanden Clinic Zurich and  
Baldota Institute of Digestive Sciences (BIDS) Mumbai



## **WELCOME**

EndoSwiss welcomes you to its 6<sup>th</sup> edition. The international course on diagnostic and therapeutic endoscopy will present the latest developments in gastrointestinal endoscopy. International highly recognised pioneers and outstanding experts in this field will attend the meeting. Four sessions will cover a variety of endoscopic live procedures supplemented by presentations, case discussions and «State of the art» lectures. Interactive teaching is a main focus of the meeting.

A «Masterclass imaging-teaching course» will be separately organised and conducted by the Japanese Gastroenterological Endoscopy Society (JGES) and the Swiss Association of Gastrointestinal Pathology (SAGIP) one day before. Focus of this course is the detection, description and classification of premalignant and cancerous GI lesions.

The course follows the guidelines and policies of ASGE and ESGE for live demonstrations and is designed for gastroenterologists, surgeons, practising physicians, endoscopy nurses, trainees and students.

Conference language will be English with simultaneous translation into Russian by native-speaking Russian endoscopists. The meeting will be live-streamed on Endo Academy and Endoscopy Campus.

We would be very happy if you joined our course. Looking forward to welcoming you in Zurich!

Stefan Seewald, Andreas Müller, Philipp Bertschinger, Bernhard Sauter,  
Jonas Zeitz

**Fujifilm Premeeting «Masterclass  
imaging – teaching course»**

Friday, June 21<sup>st</sup> 2019 2–5 p.m.

Location: Hirslanden Clinic Zurich

Conducted by Haruhiro Inoue, Gieri Cathomas and Hironori Yamamoto under patronage of the Japanese Gastroenterological Endoscopy Society (JGES) and Swiss Association of Gastrointestinal Pathology (SAGIP)

**International Faculty:**

Jacques Devière (Belgium)  
Stefan Groth (Germany)  
Mamuka Gurgenedze (Georgia)  
Anthony Hobson (United Kingdom)  
Haruhiro Inoue (Japan)  
Marnix Jansen (United Kingdom)  
Amit Maydeo (India)  
Horst Neuhaus (Germany)  
Krish Ragnath (Australia)  
Douglas K. Rex (USA)  
Thomas Rösch (Germany)  
Vladyslav Yakovenko (Ukraine)  
Hironori Yamamoto (Japan)  
Karl Yu Kim Teng (Philippines)

**Patients' Advocat:**

Roos E. Pouw (The Netherlands)

**National Faculty:**

Patrick Aepli  
Hans U. Baer  
Fridolin Bannwart  
Gieri Cathomas  
Remus Frei  
Stefan P. Mönig  
Sebastien Godat  
Aurelia Noske  
Michael A. Patak  
Claudio Redaelli  
Marc Schiesser  
Rolf Schlumpf  
Jan Schmidt  
Paul Magnus Schneider  
Othmar Schöb  
Jörn Uhlig  
Heinz Wehrli

**Course Directors:**

Stefan Seewald, Andreas Müller,  
Bernhard Sauter, Philipp Bertschinger,  
Jonas Zeitz

Live streaming on Endo Academy  
<http://endo.ua/> and  
Endoscopy Campus  
<https://www.endoscopy-campus.com/en/>

## PROGRAMME

Friday, June 21<sup>st</sup> 2019 2–5 p.m.

Location: Hirslanden Clinic Zurich

- |                       |  |
|-----------------------|--|
| <b>2.00–2.05 p.m.</b> | <b>Welcome</b><br>(Stefan Seewald)   |
| <b>2.05–2.20 p.m.</b> | <b>How to use the latest magnification technology -<br/>a practical approach</b><br>(Hironori Yamamoto)  |
| <b>2.20–2.50 p.m.</b> | <b>How to classify early neoplastic lesions in the GI tract -<br/>an update</b><br>Esophagus (Squamous cell) (Haruhiro Inoue) 5 min<br>Esophagus (Barrett's) (Krish Ragunath) 5 min<br>Stomach (Europe) (Patrick Aepli) 5 min<br>Stomach (Japan) (Haruhiro Inoue) 5min<br>Colon (Hironori Yamamoto) 10 min |
| <b>2.50–3.20 p.m.</b> | <b>Case presentations and discussions</b>  |
| <b>3.20–3.30 p.m.</b> | <b>Coffee break</b>  |
| <b>3.30–3.45 p.m.</b> | <b>What does the pathologist need to know from<br/>the endoscopist?</b><br>(Gieri Cathomas and Fridolin Bannwart)  |
| <b>3.45–4.00 p.m.</b> | <b>What makes an expert Barrett's histopathologist?<br/>Predictors of diagnostic concordance in the diagnosis<br/>of Barrett's dysplasia</b><br>(Marnix Jansen)  |
| <b>4.00–4.30 p.m.</b> | <b>Case presentations and discussion</b>   |
| <b>4.30–4.40 p.m.</b> | <b>Internet teaching platforms for endoscopic imaging</b><br>(Stefan Groth)  |
| <b>4.40–5.00 p.m.</b> | <b>Discussion</b>  |

**Saturday, June 22<sup>nd</sup> 2019 9 a.m.–5 p.m.**

**Location: Hirslanden Clinic Zurich**

**Live demonstrations from Hirslanden Clinic Zurich and BIDS Mumbai**

**9.00–9.05 a.m. Welcome**

**9.05–10.30 a.m. Session I** (live demonstrations and presentations)

**«Colonoscopy in the year 2030 – how will artificial intelligence change our way to do colonoscopy?»**  
(Douglas K. Rex)

**10.30–11.00 a.m. Coffee break and industry exhibition**

**11.00 a.m.–1.00 p.m. Session II** (live demonstrations and presentations)

**«Endoscopy for adipositas and fatty liver disease – an update»** (Jacques Devière)

**«Smart pill – a new tool for the gastroenterologist? – indications and clinical impact»** (Anthony Hobson)

**1.00–2.00 p.m. Lunch break and industry exhibition**

**2.00–3.30 p.m. Session III** (live demonstrations and presentations)

**«Full thickness resection in the upper GI tract – ready to go?»** (Thomas Rösch)

**«Barrett’s esophagus between WATS, magnification and resection – an update»** (Krish Ragunath)

**3.30–3.45 p.m. Coffee break**

**3.45–5.00 p.m. Session IV** (live demonstrations and presentations)

**Don Wilson Lecture «ERCP: standards and new technologies»** (Horst Neuhaus)



## Parking

Car park Hirslanden Clinic Zurich

## Public transportation

- From Zurich main station: Tram No. 11 direction «Rehalp», exit at «Balgrist»
- From Zurich Stadelhofen: Tram No. 11 direction «Rehalp», exit at «Balgrist», or Forchbahn (S18) direction «Esslingen», exit at «Balgrist»
- From Zurich airport: Take S16 to Zurich Stadelhofen and then tram No. 11 direction «Rehalp», exit at «Balgrist», or Forchbahn (S18) direction «Esslingen», exit at «Balgrist»

[www.sbb.ch](http://www.sbb.ch)

### Organisation

EndoSwiss Congress GmbH

### Homepage and registration

<http://www.endoswiss.ch>

### Endorsement

ASGE, ESGE, DGEbv, JGES, WEO,  
SVEP, Endo Academy

### Accreditation

CME 3 (SGG) (21.6.2019)

CME 3 (SGAIM)



CME 6 (SGG) (22.6.2019)

CME 7 (SGAIM)



### Location

Hirslanden Clinic Zurich  
Witellikerstrasse 40  
8032 Zürich

### Contact:

Jasmina Cantekin  
Phone: +41 44 387 39 21  
E-Mail: [jasmina.cantekin@endoswiss.ch](mailto:jasmina.cantekin@endoswiss.ch)

### Principal Sponsors:



**FUJIFILM**  
Value from Innovation

**Boston Scientific**  
Advancing science for life™

### Major Sponsors:



**treier**  
ENDOSCOPE

### Regular Sponsors:



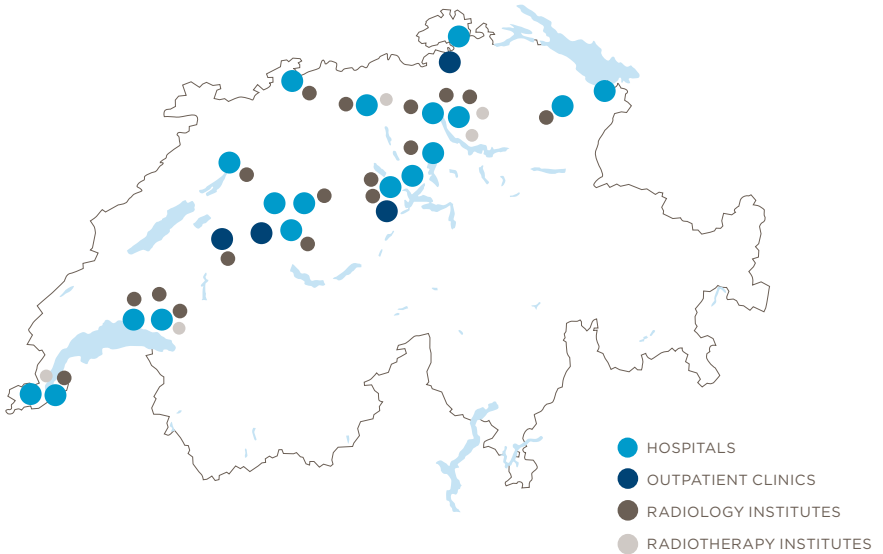
**B|BRAUN**  
SHARING EXPERTISE



## EXPERTISE YOU CAN TRUST.

YOUR HEALTH IS OUR PRIMARY CONCERN. WE LOOK AFTER YOUR HEALTH EVERY DAY AT OUR 18 HOSPITALS, 4 OUTPATIENT CLINICS, 17 RADIOLOGY INSTITUTES AND 5 RADIOTHERAPY INSTITUTES AS WELL AS AT OUR INTEGRATED OUTPATIENT CENTRES AND EMERGENCY DEPARTMENTS. WE ARE HERE TO HELP YOU IN YOUR REGION TOO: AARAU, BERN, BIEL, CHAM, DÜDINGEN, GENEVA, HEIDEN, LAUSANNE, LUCERNE, MEGGEN, MÜNCHENSTEIN, SCHAFFHAUSEN, ST GALLEN AND ZÜRICH.

FOR DETAILS ABOUT THE SITES, VISIT: [WWW.HIRSLANDEN.CH/LOCATIONS](http://WWW.HIRSLANDEN.CH/LOCATIONS)



ADVICE AND INFORMATION  
HIRSLANDEN HEALTHLINE 0848 333 999

**KLINIK HIRSLANDEN**  
WITELLIKERSTRASSE 40  
8032 ZÜRICH  
T +41 44 387 94 41  
BILDUNG@HIRSLANDEN.CH

[WWW.KLINIKHIRSLANDEN.CH](http://WWW.KLINIKHIRSLANDEN.CH)  
[WWW.HIRSLANDEN.CH](http://WWW.HIRSLANDEN.CH)

